

Sure-Grip® EX safety storage cabinets offer top performance for indoor flammable liquid storage and protection.

Fusible links hold doors wide open and melt at 165 F (74 C) for automatic closure (on self-closing models).

Sturdy 18-gauge (1-mm) double wall steel construction with 1-1/2-in (38-mm) of insulating air space.

Easy-close, self-latching doors; U-Loc™ handle (shown below) does not require manual rotation to engage mandatory three-point latch.

Fully welded, not riveted, construction holds squareness for longer life and offers greater protection in a fire since air gaps are reduced.

Continuous piano hinge provides smooth closure.

Durable and chemical-resistant, lead-free powder-coat paint finish, inside and out, retains high gloss look and minimizes the effects of corrosion and humidity.

Dual vents with built-in flash arresters strategically placed at bottom and opposite top.



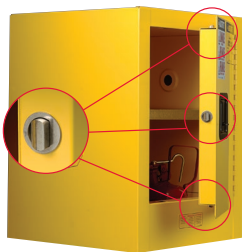
45-gal (170-L) self-close door style

Concealed self-close mechanism provides obstruction-free access to top shelf space. Self-indexing doors guarantee they will close in sequence and ensure a tight closure from top to bottom (on self-closing models). **Patented.**

Patented SpillSlope® safety shelves direct spills to back and bottom of leakproof sump. Adjustable on 3-in (76-mm) centers, they meet ANSI standards with a 350-lb (159-kg) safe allowable load.

Welded shelf hangers interlock with shelf to offer maximum stability with no flimsy brackets to lose.

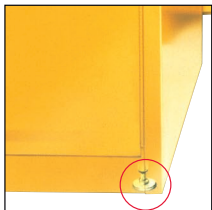
2-in (51-mm) leakproof containment sump holds leaks and meets EPA requirements.



Stainless steel, 3-point bullet self-latching system provides fail-safe, positive door closure with increased heat resistance.



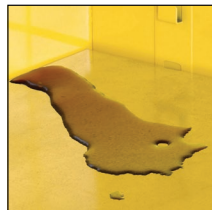
Complies with OSHA 29 CFR 1910.106 and NFPA Code 30, section 9.5.3



Adjustable leveling feet support cabinets on uneven surfaces.



U-Loc™ handle includes double key set or can be padlocked (not included) for greater security.



SpillSlope® safety shelves direct spills to back and bottom of leakproof sump. Meets ANSI MH28.1



Welded construction holds squareness for long life; door astragal provides extra sturdiness.



Highly visible HazAlert™ reflective label provides warning—"Flammable – Keep Fire Away" in English, Spanish, and French.



Built-in grounding connector Shown with optional ground wire 08500.

Sure-Grip® EX Classic Safety Cabinets

Protect workers, reduce fire risks, and improve productivity by storing flammable fuels and chemicals in OSHA- and NFPA-compliant safety cabinets

- Independently fire tested and approved by FM Approvals
- 18-gauge (1-mm) thick double-wall, welded steel with 1-1/2-in (38-mm) of insulating air space.
- Adjustable, patented SpillsSlope® galvanized steel shelves direct spills to back and bottom of 2-in (51-mm) leakproof sump
- 3-point stainless steel bullet latching system
- Self-closing models feature a fusible link that holds doors open—in fire conditions it melts at 165 F (74 C) for automatic closure. Concealed mechanism offers obstruction-free access to contents.
- U-Loc™ handle with two keys—accepts optional padlock
- Trilingual warning with Haz-Alert™ reflective labels
- Includes dual vents with flame arresters, adjustable leveling feet, and grounding connector



Complies with OSHA and provides 10 minutes of evacuation time.

Capacity Gal/L	Doors and Style	H x W x D	Shelves	Approv/Lstg Regulation	Model	CA Prop 65
30/114	2 door, manual	44 x 43 x 18 in	1	FM, N, O, A	893000	
	2 door, self-close	1118 x 1092 x 457 mm		FM, N, O, A, I	893020	⚠
45/170	2 door, manual	65 x 43 x 18 in	2	FM, N, O, A	894500	
	2 door, self-close	1651 x 1092 x 457 mm		FM, N, O, A, I	894520	⚠
60/227	2 door, manual	65 x 34 x 34 in		FM, N, O, A	896000	
	2 door, self-close	1651 x 864 x 864 mm		FM, N, O, A, I	896020	⚠
90/341*	2 door, manual	65 x 43 x 34 in	FM, N, O, A	899000		
	2 door, self-close	1651 x 1092 x 864 mm	FM, N, O, A, I	899020	⚠	

*OSHA 29CFR 1910.106(d)(3) states that not more than 60 gallons (227 L) of Category 1, 2, or 3 flammable liquids, nor more than 120 gallons (454 L) of Category 4 flammable liquids may be stored in a safety cabinet.

Accessories	Fits Cabinet Styles	W x D	Model
SpillsSlope® steel shelf	30 & 45 gallon (114 & 170 L) - 43 in W (1092 mm)	39.375 x 14 in (1000 x 356 mm)	29937
	30 gallon (114 L) - 36 in W (914 mm)	32.375 x 20 in (822 x 508 mm)	29942
	60 gallon (227 L) - 34 in W (864 mm)	30.375 x 29 in (771 x 737 mm)	29944
	90 gallon (341 L) - 43 in W (1092 mm)	39.375 x 29 in (1000 x 737 mm)	29945

⚠ WARNING: This product can expose you to chemicals including lead, which is known to the State of California to cause cancer and birth defects or other reproductive harm. For more information go to www.P65Warnings.ca.gov.