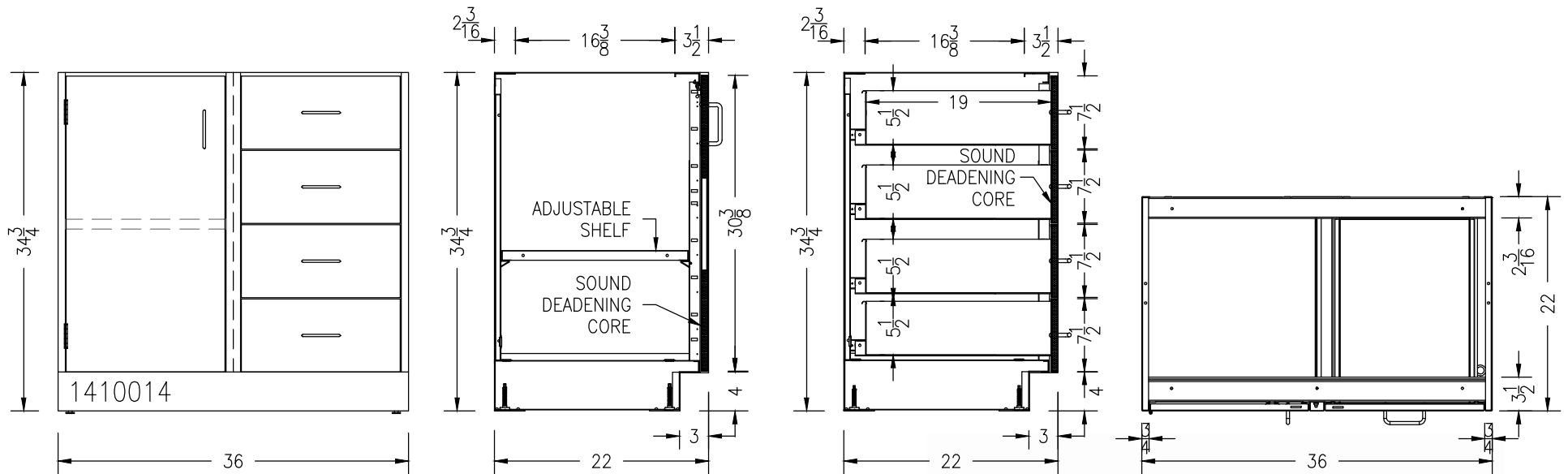


36"W COMBINATION CABINET FULL-DOOR L.H. / 4-DRAWER



- DRAWER SLIDES: $\frac{3}{4}$ EXTENSION 100 LB NYLON ROLLER SLIDES
- NYLON ROLLER DOOR CATCH
- ALUMINUM WIRE PULLS
- STAINLESS STEEL 5-KNUCKLE HINGES
- ADJUSTABLE LEVELING FEET WITH UP TO 1.5" OF ADJUSTMENT
- SOUND DEADENING CORE INSIDE DOOR AND DRAWER FRONTS
- (1) PAINTED STEEL ADJUSTABLE SHELF - KV239 SHELF CLIPS
- COLOR: WARM GRAY

CABINET GAUGES

20 GAUGE	DRAWER BODIES, SHELVES, DOOR AND DRAWER LINERS, REMOVABLE BACKS
18 GAUGE	CABINET GABLES, TOPS, BOTTOMS, TOEKICKS, OUTER DOOR FRONT PANELS, OUTER DRAWER FRONT PANELS
16 GAUGE	TOP AND INTERMEDIATE CHANNELS, BASE CABINET REAR RAIL
14 GAUGE	DRAWER SUSPENSION, HINGE PLATES, BASE CABINET TOP RAIL
11 GAUGE	CABINET LEVELER SUPPORT



NEL direct
online industrial & laboratory furniture
888.635.2949 | NELdirect.com

1410014

09/08/15