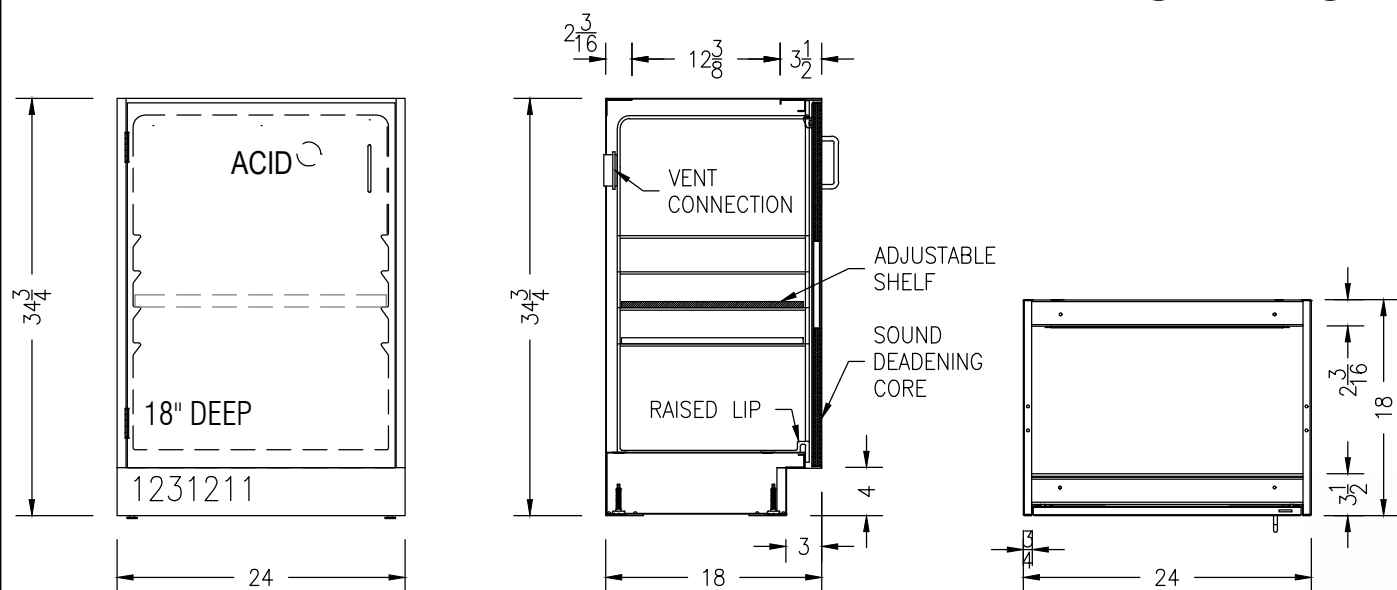


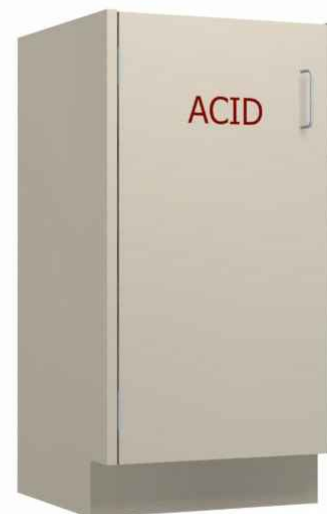
24"W LEFT HINGED ACID STORAGE CABINET



- ALUMINUM WIRE PULLS
- STAINLESS STEEL 5-KNUCKLE HINGES
- ADJUSTABLE LEVELING FEET WITH UP TO 1.5" OF ADJUSTMENT
- SOUND DEADENING CORE INSIDE DOOR FRONTS
- SINGLE PIECE WHITE MOLDED POLYETHYLENE TUB LINER CABINET INSERT WITH RADIUS CORNERS FOR EASY CLEANING
- 1" RAISED FRONT LIP FOR SPILL CONTAINMENT
- BACK OF DOOR IS POLYETHYLENE LINED WITH A PLASTIC ROLLER CATCH
- (1) $\frac{3}{4}$ " THICK BLACK PHENOLIC ADJUSTABLE SHELF
- VENT KIT FOR FUME HOOD INCLUDED
- COLOR: WARM GRAY WITH RED "ACID" LETTERING

CABINET GAUGES

20 GAUGE	DOOR LINERS, REMOVABLE BACKS
18 GAUGE	CABINET GABLES, TOPS, BOTTOMS, TOEKICKS, OUTER DOOR FRONT PANELS
16 GAUGE	TOP AND INTERMEDIATE CHANNELS, BASE CABINET REAR RAIL
14 GAUGE	HINGE PLATES, BASE CABINET TOP RAIL
11 GAUGE	CABINET LEVELER SUPPORT



NEL *direct*
 online industrial & laboratory furniture
 888.635.2949 | NELdirect.com

1231211

09/08/15