

Acid Cabinet Vent Components

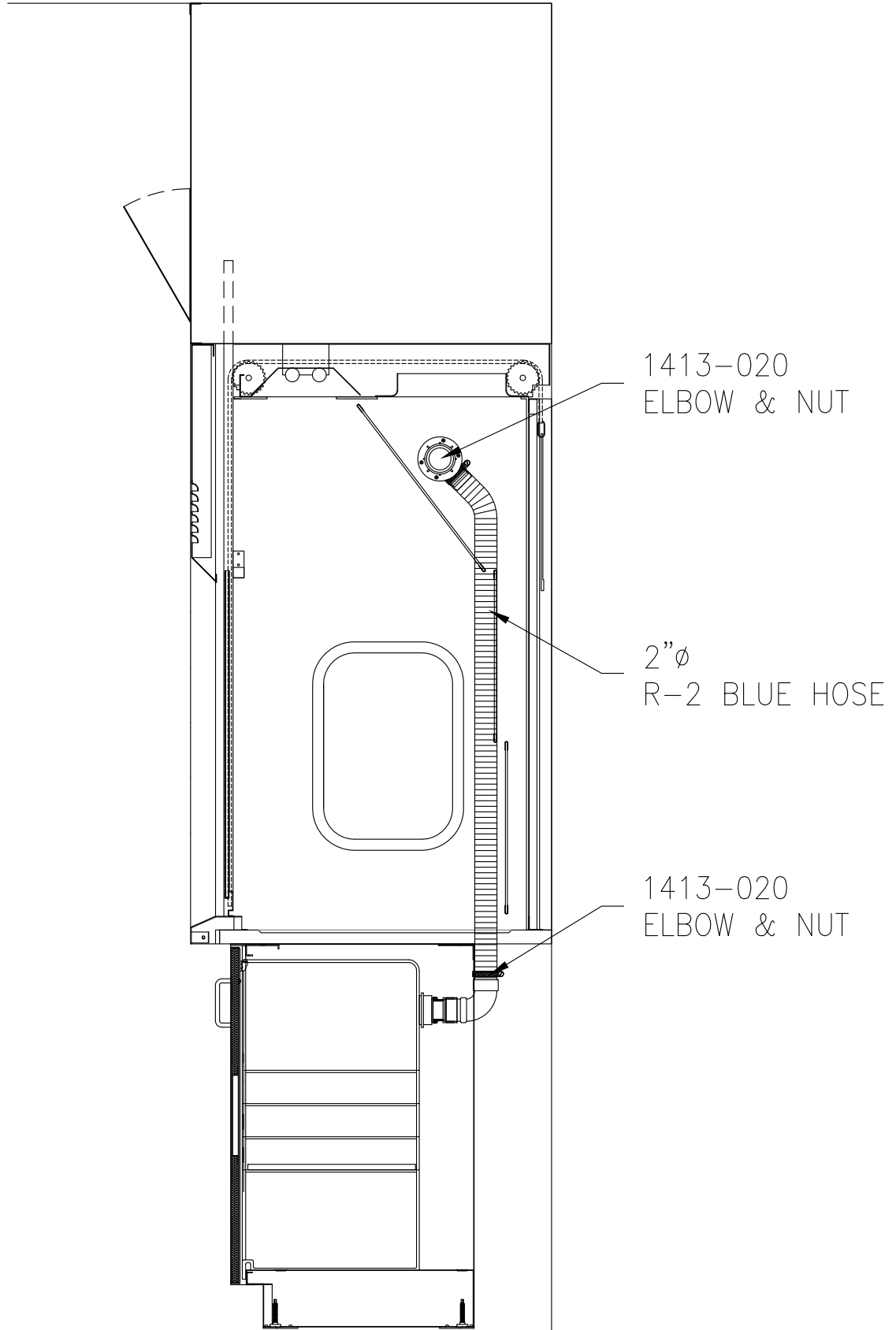


**90 DEGREE
CPVC ELBOW**

CABLE TIE

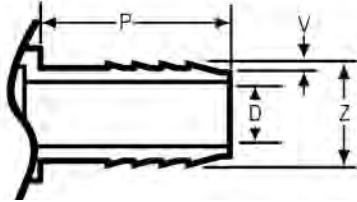
R2 HOSE

**CPVC
FLANGE NUT**





PVC & PP INSERT FITTINGS FOR USE WITH POLYETHYLENE PIPE



Dimensions of Insert Ends ASTM D 2609

Nominal Size in.	Insert Length "P" min.	Barb O.D. "Z"		Barb Depth "V" min.	Inside Diameter "D" min.
		max.	min.		
1/2	1-1/4	.665	.635	.015	.406
3/4	1-1/4	.865	.835	.015	.562
1	1-1/4	1.095	1.065	.020	.750
1-1/4	1-1/4	1.425	1.395	.025	.995
1-1/2	1-1/2	1.665	1.630	.030	1.125
2	1-1/2	2.125	2.085	.030	1.656
2-1/2	2	2.520	2.487	.030	2.062
3	2-1/8	3.125	3.086	.030	2.600
4	3	4.090	4.044	.030	3.525

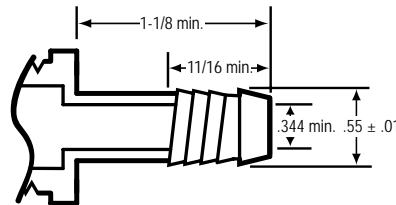
Dimensions of Polyethylene Pipe ASTM D 2104 and D 2239

Nominal Size in.	Average I.D. in.	Tolerance in.
1/2	.622	+.010-.010
3/4	.824	+.010-.015
1	1.049	+.010-.020
1-1/4	1.380	+.010-.020
1-1/2	1.610	+.015-.020
2	2.067	+.015-.020
2-1/2	2.469	+.015-.025
3	3.068	+.015-.030
4	4.026	+.015-.035

Insert Fittings Dimensions

- G = (LAYING LENGTH) Intersection of center lines to insert bottom or thread bottom; 90° elbows, tees & crosses; ±1/32 inch.
- H = Intersection of center lines to end of insert or face of fitting; 90° elbows, tees & crosses; ± 1-32 inch.
- L = overall length of fittings; ± 1-16 inch.
- N = (LAYING LENGTH) Insert bottom to insert bottom or thread bottom; couplings & straight adapters; ± 1/16 inch.

Dimensions of Spiral Barb Ends



STANDARDS & SPECIFICATIONS

• **ASTM D 2609** Plastic Insert Fittings for Polyethylene (PE) Plastic Pipe.



National Sanitation Foundation (NSF) Standard 14 Plastic Fittings for Potable Water.

• **Material** Spears® Insert Fittings are produced from PVC Type 1, Cell Classification 12454.

It is the users responsibility to determine the suitability for the intended service application.



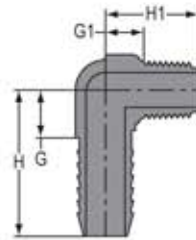
888.635.2080 | newenglandlab.com



PVC & PP INSERT FITTINGS FOR USE WITH POLYETHYLENE PIPE

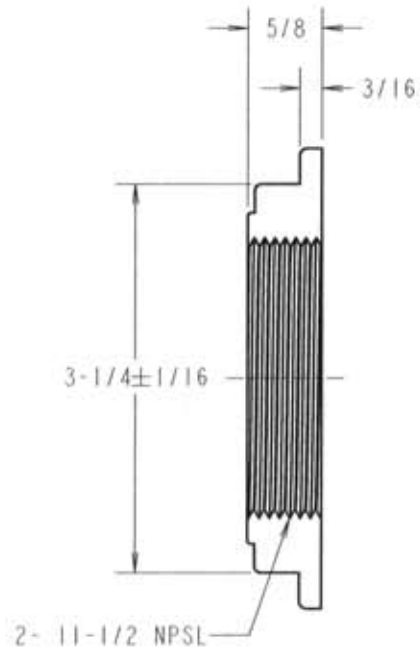
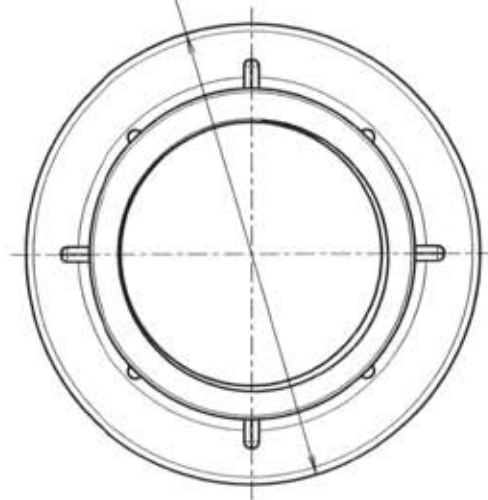
PVC 90° ELBOW

Insert x Mipt



Part Number	Size	G	G1	H	H1	Approx. Wt. (Lbs.)
1413-005	1/2	1/2	5/8	2	1-1/4	.03
1413-007	3/4	1/2	11/16	2	1-5/16	.05
1413-010	1	11/16	23/32	2-3/16	1-19/32	.07
1413-012	1-1/4	27/32	31/32	2-11/32	1-27/32	.12
1413-015	1-1/2	15/16	1-3/32	2-23/32	2-1/8	.17
1413-020	2	1-1/4	1-3/8	3	2-7/16	.24

3-13/16 ± 1/16





ENGINEERING & TECHNICAL DATA — Flexadux[®] PV R-2

INSIDE DIAMETER (IN)	APPROX. WEIGHT (LBS/FT)	WALL THICKNESS (IN)	CL BEND RADIUS (IN)	COMPRESSION RATIO	NEGATIVE PRESSURE (IN/HG)	WORKING PRESSURE (PSI)
1.25	.14	.020	1	2:1	29	27
1.5	.17	.020	1.42	2:1	29	25
1.75	.19	.020	1.75	2:1	29	21
2	.22	.020	2.08	2:1	29	19
2.25	.24	.020	2.17	2:1	29	17
2.5	.24	.020	2.25	3:1	19	14
3	.29	.020	2.5	3:1	11	12
4	.36	.020	3.3	5:1	9	8
5	.45	.020	3.86	5:1	4.7	6.5
6	.53	.020	4.42	5:1	2.7	5.4
7	.56	.020	5.42	6:1	2.8	3.9
8	.64	.020	6.42	6:1	1.9	3.4
10	.797	.020	7.21	6:1	1	2.7
12	.954	.020	8	6:1	.6	2.3
14	1.111	.020	9	6:1	.4	2
16	1.268	.020	10	6:1	.3	1.7
18	1.65	.020	11	6:1	.17	1.4

Technical data based on 2 ft. straight lengths of hose @ 72°

Construction: Light weight PVC hose reinforced with a spring steel wire helix

Temperature Range: 20°F to 160°F

Standard Color: Blue and Clear

Standard Lengths: 25 & 50 Feet

- Blue is listed as UL 94V-0 flame retardant

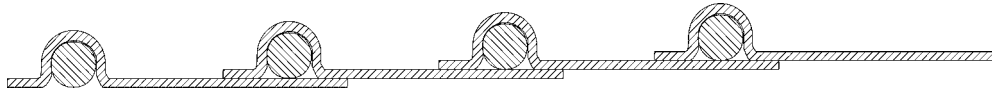
Disclaimer: The proper use and maintenance of hose and/or ducting manufactured by Flexaust is the sole responsibility of the purchaser and ultimate user of the product. This information is presented as a general guide only. The number of variables which can be present in any application make firm recommendations impossible.

Tel: 574-267-7909 • Toll Free Tel: 800-343-0428 • Toll Free Fax: 800-382-8464
sales@flexaust.com • www.flexaust.com

R-2 (Blue)

April 2004

Construction: Medium weight blue PVC wall hose construction reinforced with a spring steel wire helix



Product Features:

- Good for positive pressure and light vacuum applications
- Combines extreme flexibility and excellent compressibility with tight bending characteristics
- Easy to clean, smooth inner surface assures minimal friction loss and efficient flow characteristics
- Resists weathering, chemicals, and moisture
- Good abrasion resistance
- Listed as UL 94V-0 flame retardant

Applications: Recommended for industrial air movement and fume control applications.

Temperature Range: 20°F to 160°F

Diameter Range (Inches I.D.): 1.25-18.00 Inch I.D.

Standard Length: 25 & 50 Feet

I.D. Tolerances (Inches): To 8 Inch: -0.00 to +0.125 Inch
8 Inch and over: -0.00 to +0.250 Inch

Standard Color: Blue

End Finish: Plain Cut

Markets: •Agricultural •Air Duct Cleaning •Chemical Fumes •Duct Cleaning •Flame Retardant •Flight Simulators •Furnace Duct Cleaning •Meat Packing •Pharmaceutical •Pipe Organs •Pollution Control •Printing •R.V. Manufacturing •Stereo Speakers •Textile Mills •Welding

The Flexaust Company Inc.



P.O. Box 4275, 1510 Armstrong Road
Warsaw, IN 46581-4275

Phone 800-343-0428 • Fax 800-382-8464

Website <http://www.flexaust.com> • e-mail sales@flexaust.com

 new england lab
lab-tested furniture systems

888.635.2080 | newenglandlab.com