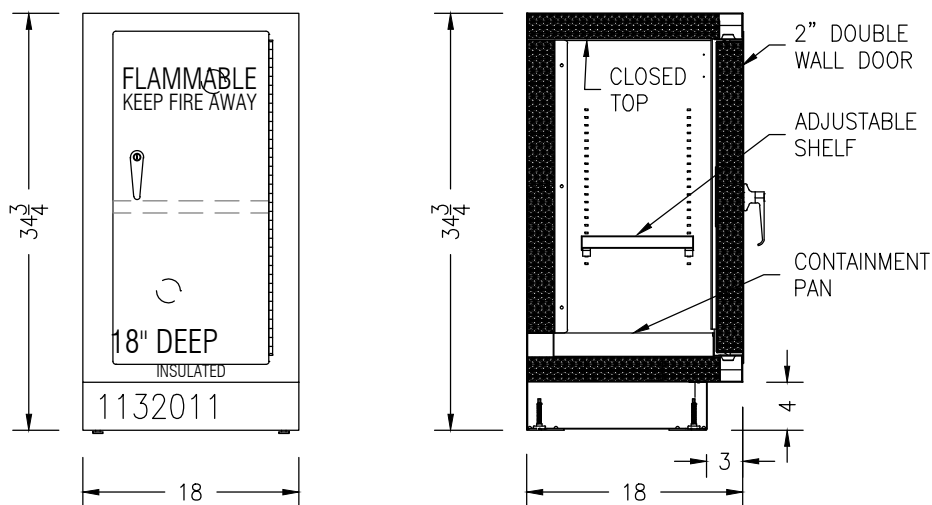


18"W RIGHT HINGED INSULATED SOLVENT STORAGE CABINET



- THREE POINT LOCKABLE SELF-LATCHING HINGE
- PAINTED STEEL PIANO HINGE
- ADJUSTABLE LEVELING FEET WITH UP TO 1.5" OF ADJUSTMENT
- 2" INSULATED DOUBLE PANEL WALLS AND DOORS
- 2" DEEP LIQUID TIGHT SPILL CONTAINMENT PAN
- UL 1275 LISTED
- BUILT TO NFPA 30, NFPA 45, AND OSHA STANDARDS
- (1) PAINTED GALVANIZED STEEL ADJUSTABLE SHELF - KV239 SHELF CLIPS
- 2 PLUGS FOR POSSIBLE VENT CONNECTION - VENT NOT INCLUDED
- COLOR: WARM GRAY WITH RED "FLAMMABLE KEEP FIRE AWAY" LETTERING

CABINET GAUGES

20 GAUGE	DOOR LINERS, REMOVABLE BACKS
18 GAUGE	CABINET GABLES, TOPS, BOTTOMS, TOEKICKS, OUTER DOOR FRONT PANELS
16 GAUGE	TOP AND INTERMEDIATE CHANNELS, BASE CABINET REAR RAIL
14 GAUGE	HINGE PLATES, BASE CABINET TOP RAIL
11 GAUGE	CABINET LEVELER SUPPORT



NEL direct
online industrial & laboratory furniture
888.635.2949 | NELdirect.com

1132011

07/26/16