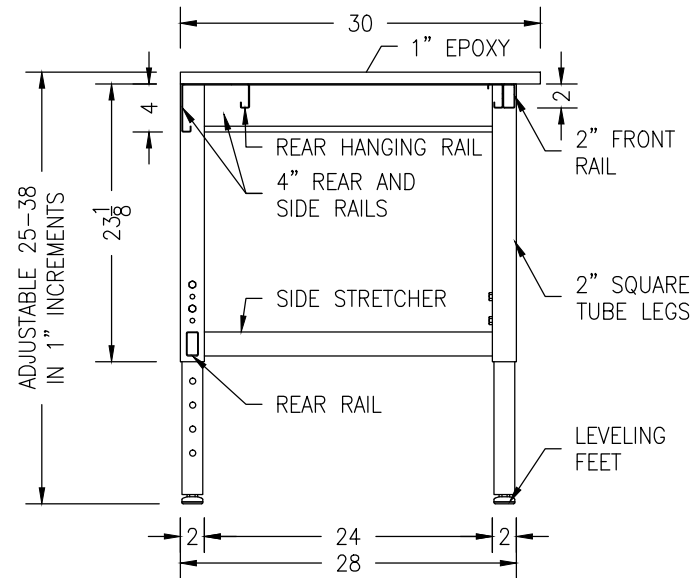


Technical drawing of the table showing dimensions and labels:

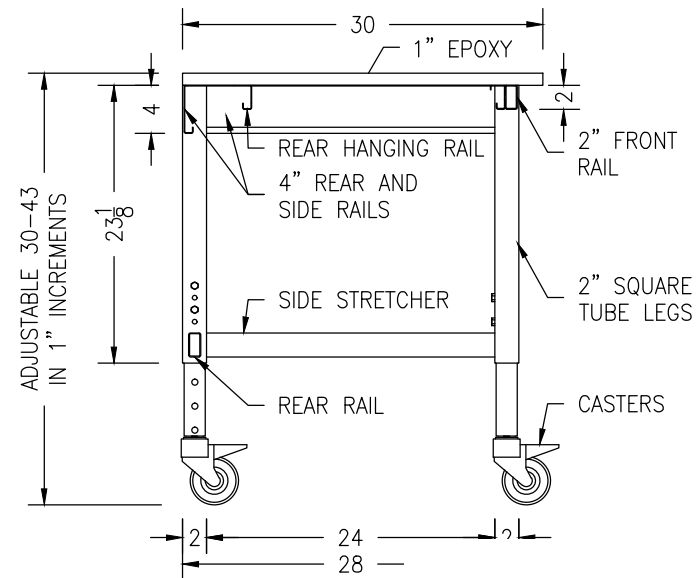
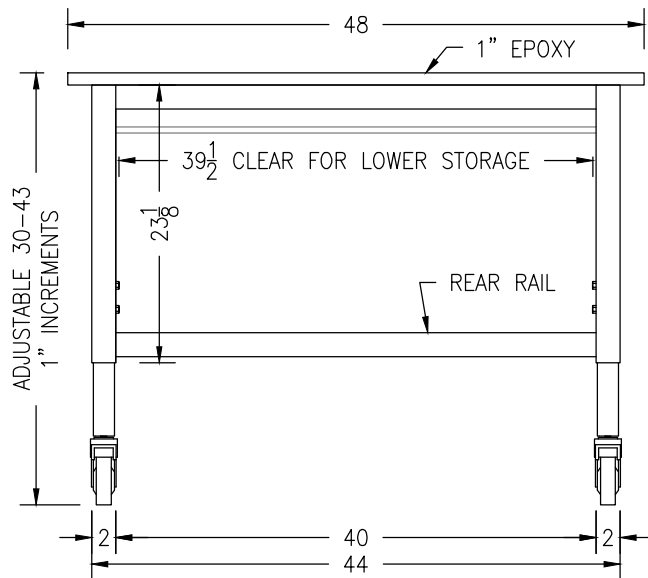
- Top width: 48
- Top label: 1" EPOXY
- Left side label: ADJUSTABLE 25-38 1" INCREMENTS
- Inner width (top): $39\frac{1}{2}$ CLEAR FOR LOWER STORAGE
- Inner width (bottom): $23\frac{1}{8}$
- Bottom label: REAR RAIL
- Bottom width (inner): 40
- Bottom width (outer): 44
- Bottom edge offset: 2



-  **NELdirect**
online industrial & laboratory furniture
888.635.2949 | NELdirect.com

08/05/16

30"X48" CAMBRIDGE Q SERIES LAB TABLE WITH 1" BLACK EPOXY TOP



*LEVELING FEET SHIPPED LOOSE FOR FUTURE USE



- CONSTRUCTION: PANTED STEEL FULLY WELDED FRAME WITH STAINLESS STEEL DUAL BOLTED LEG INSERTS FOR ADJUSTMENT
- ADJUSTMENT: TABLES ADJUST IN 1" INCREMENTS
 - LEVELING FEET: 25-38" INCLUDING 1" COUNTERTOP
 - CASTERS: 30-43" INCLUDING 1" COUNTERTOP
- MOBILITY: BOTH LEVELING FEET AND CASTERS ARE INCLUDED
- LOWER STORAGE FLEXIBILITY: HANGING RAILS SUPPORT UNDER WORKSURFACE COMPONENTS (SOLD SEPARATELY)
- UPPER FLEXIBILITY: OPTIONAL SHELVING SYSTEM (SOLD SEPARATELY) BOLTS TO REAR TABLE LEGS (ADDING 1.625" DEPTH)
- WEIGHT CAPACITY: 1000 LBS EVENLY DISTRIBUTED ON FRAME FOR SUPPORTING THE WORK SURFACE, LOWER STORAGE, AND BENCH TOP EQUIPMENT
- 1" THICK (48" WIDE X 30" DEEP) BLACK EPOXY WORKSURFACE INCLUDED
- WORKSURFACE HAS A 2" OVERHANG AT THE FRONT AND SIDES AND IS FLUSH WITH THE BACK FOR ADDING FUTURE OVERHEAD ACCESSORIES
- * CASTER SWIVEL MAY INTERFERE WITH SUSPENDED CABINETS AT LOWER TABLE HEIGHT ADJUSTMENTS



NEL direct
online industrial & laboratory furniture
888.635.2949 | NELdirect.com

TOD3048 - 2 OF 2

08/05/16