



WaterSaver

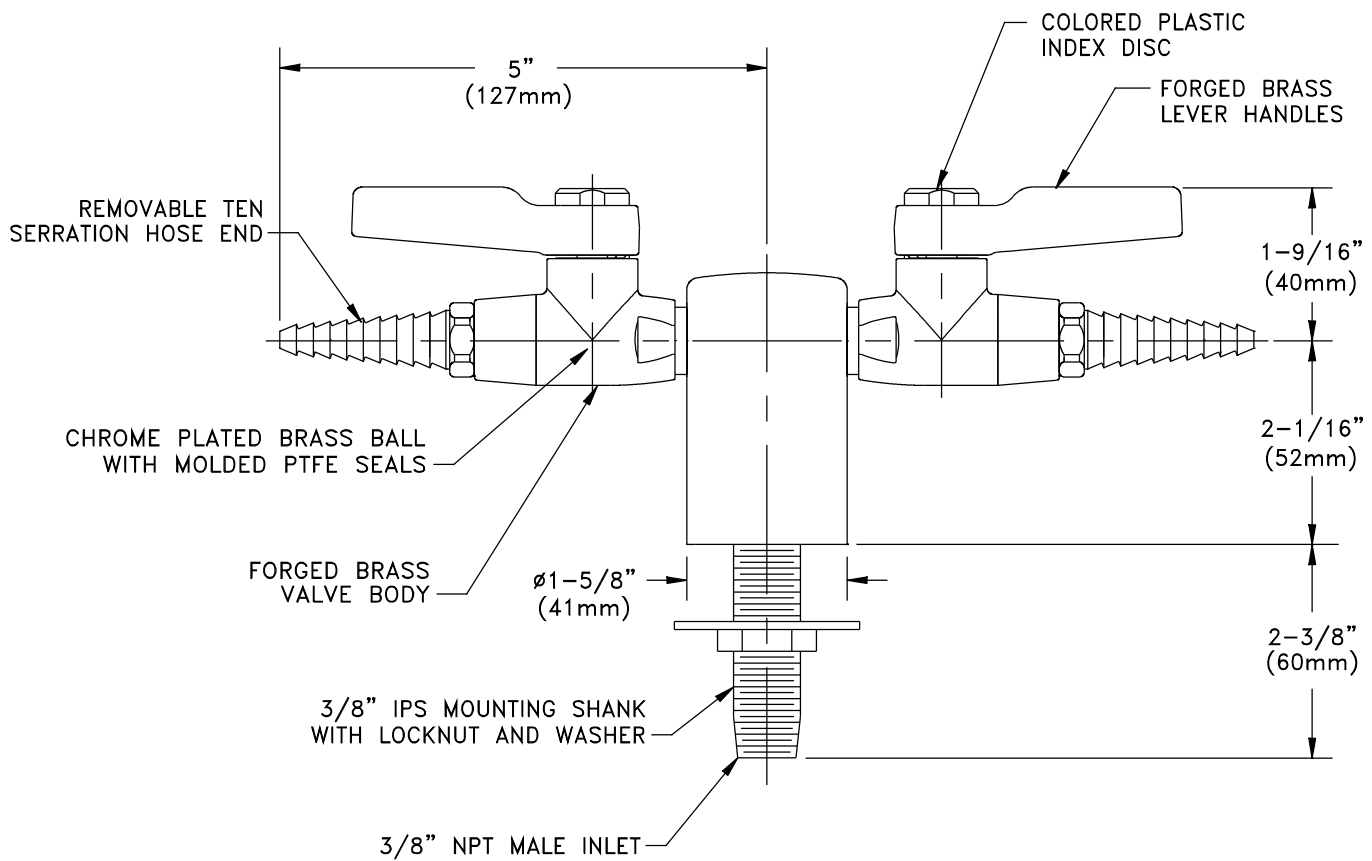
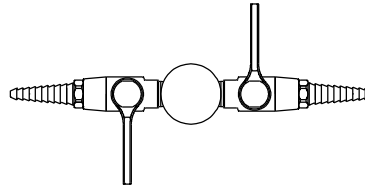
INNOVATIVE PRODUCTS FOR RESEARCH

WaterSaver Faucet
701 W Erie St
Chicago, IL 60654

312 666 5500 TELEPHONE
312 666 5501 FACSIMILE
wsflab.com

L4200-132SWSA

LABORATORY BALL VALVE ASSEMBLY, DECK MOUNTED DOUBLE AT 180°



NOTES:



- LABORATORY BALL VALVE ASSEMBLY IS CERTIFIED BY CSA INTERNATIONAL TO COMPLY WITH ANSI Z21.15 AND CGA 9.1.
- FIXTURE IS FULLY ASSEMBLED AND FACTORY TESTED AT 150 PSI AIR PRESSURE. MAXIMUM WORKING PRESSURE IS 100 PSI.
- SPECIFY IF CLEANING FOR OXYGEN AND HIGH PURITY GASES IS REQUIRED.
- FIXTURE HAS A POLISHED CHROME PLATED FINISH.

MEASUREMENTS MAY VARY ±1/4" (6mm).

Drawing Number: _____

Revision Number: 021516-TEC